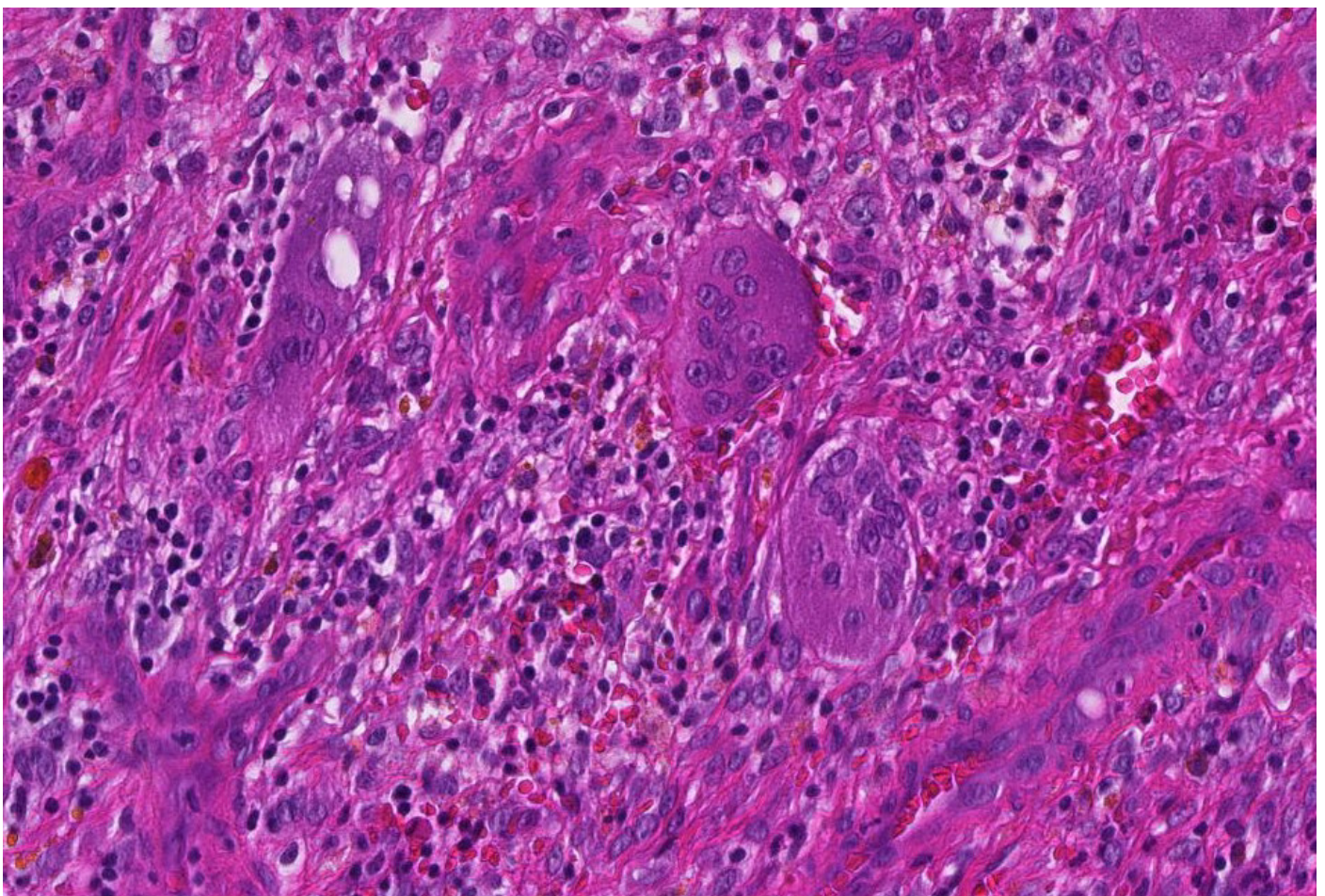
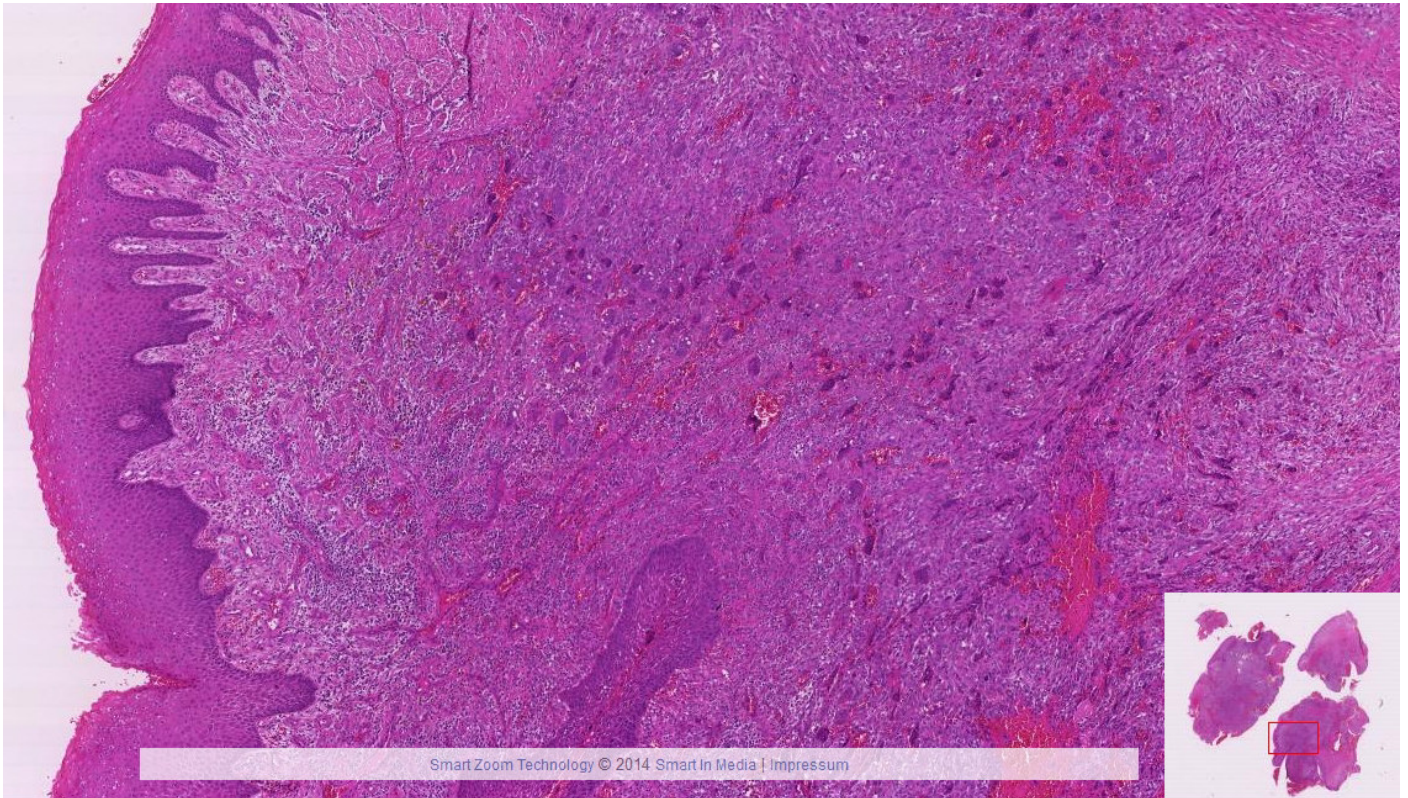
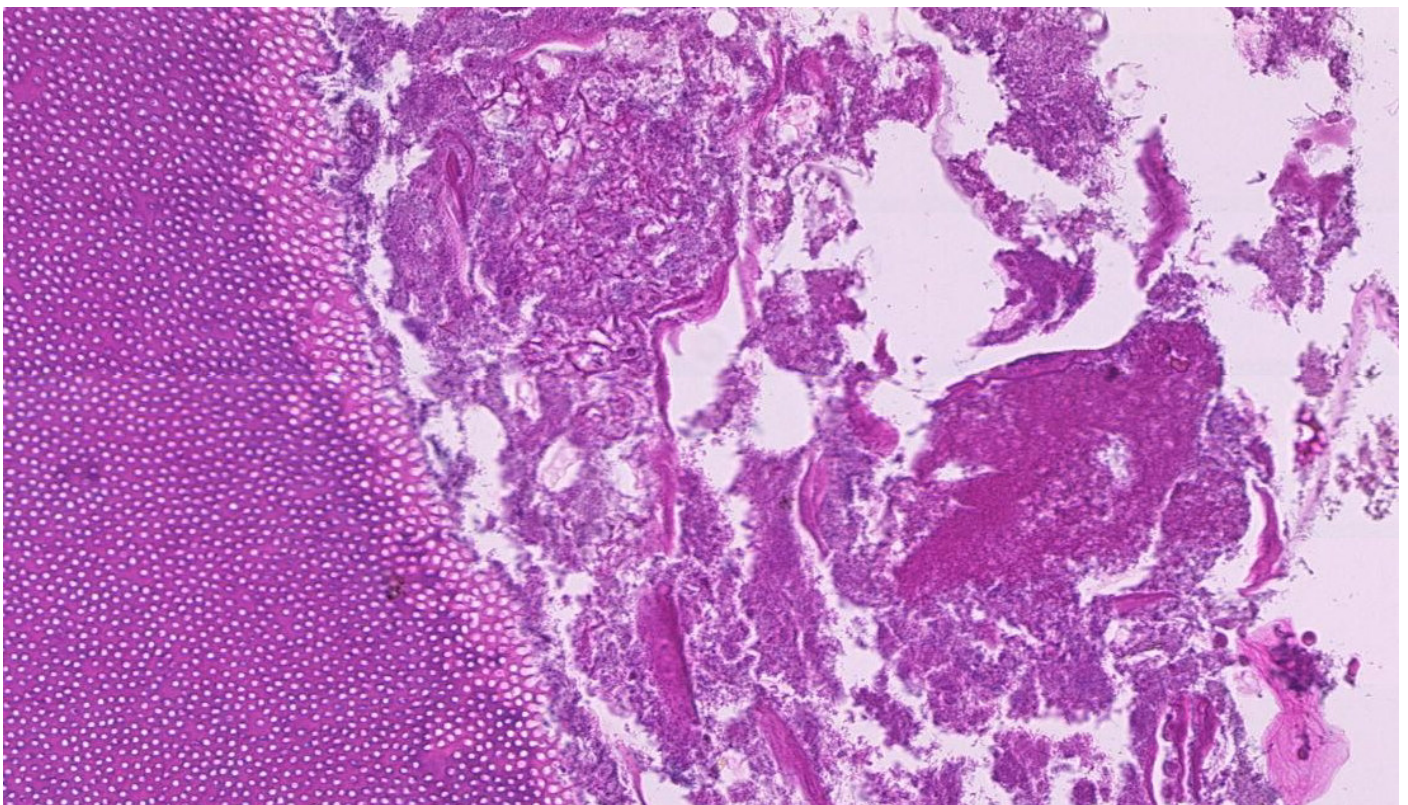


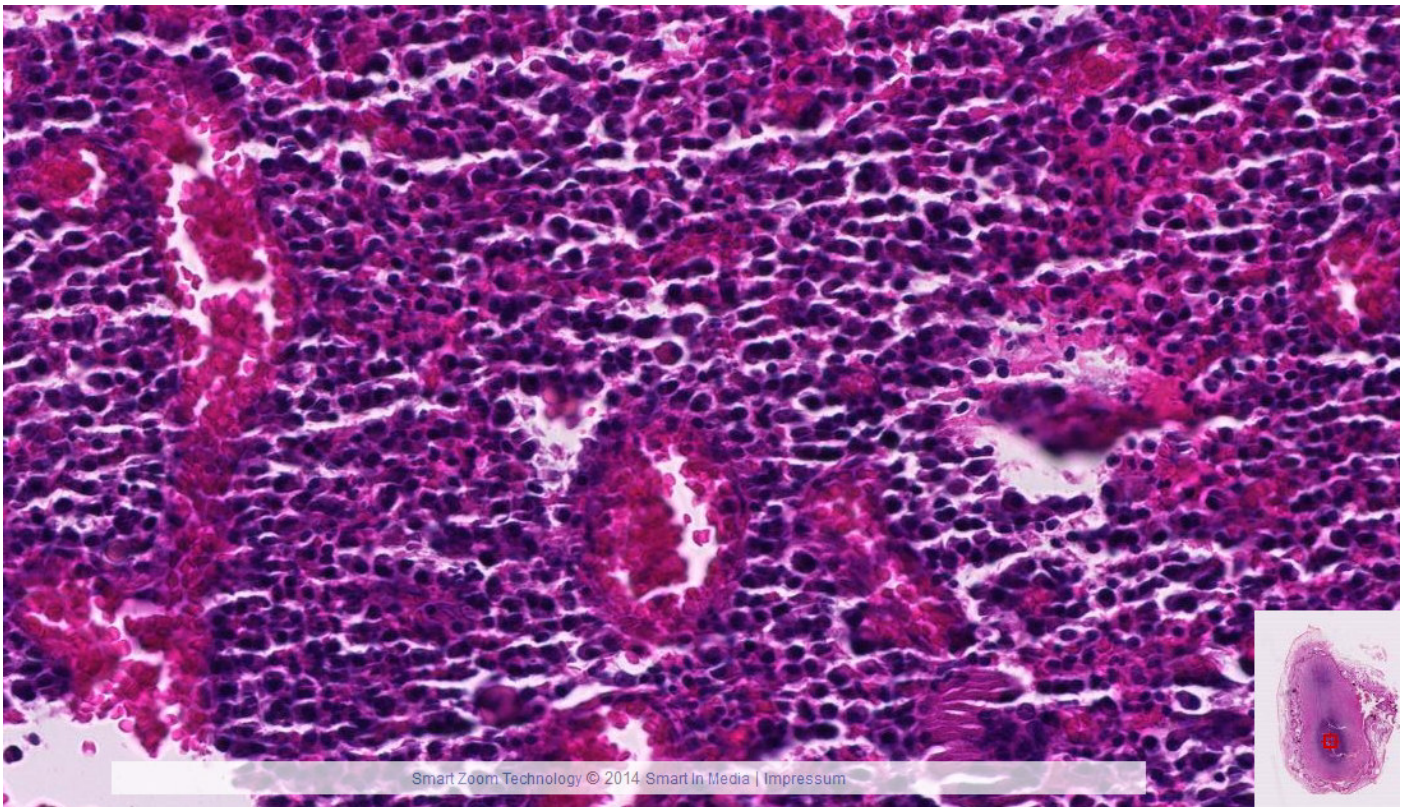
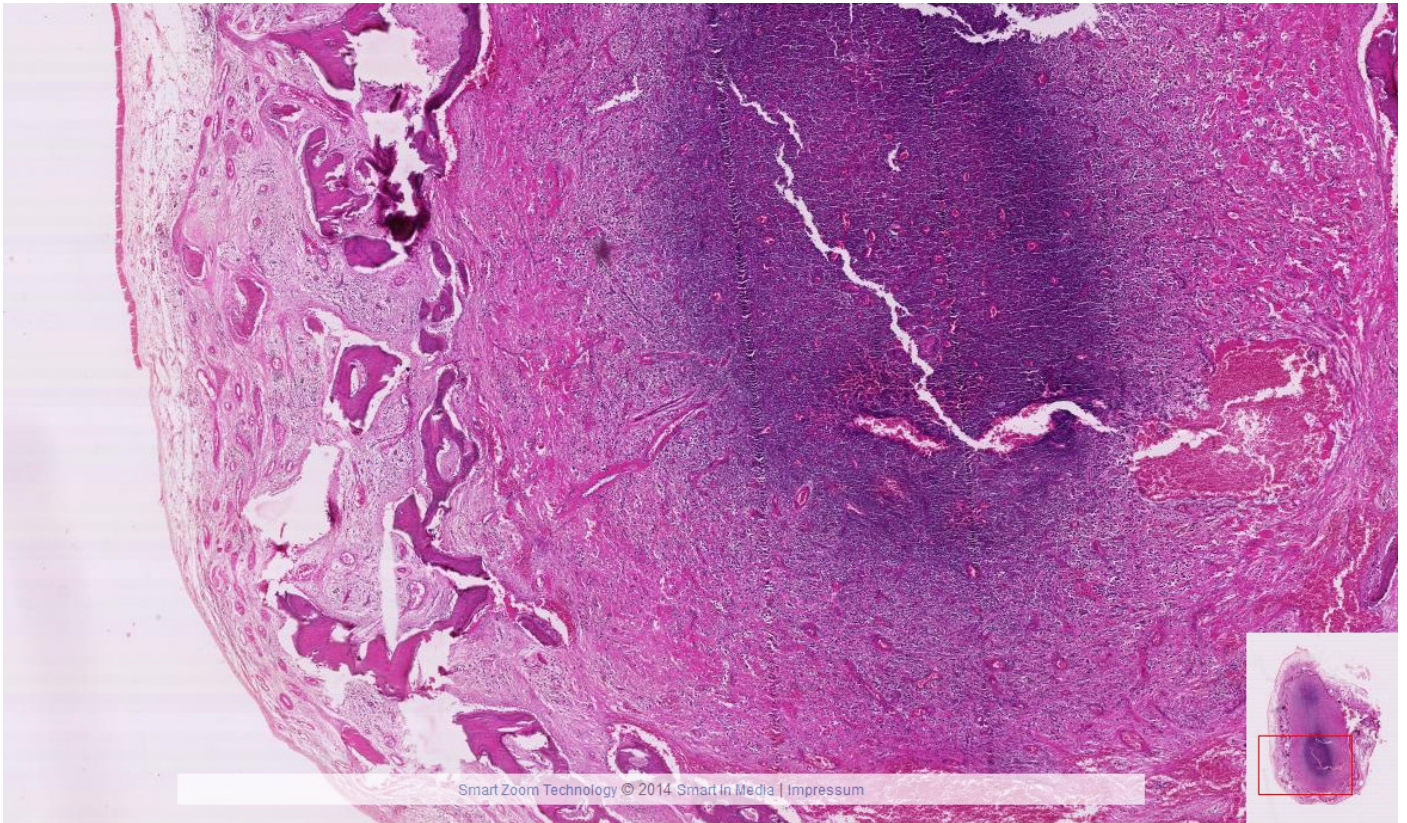
VIII-Riesenzellepulvis(Gingiva)



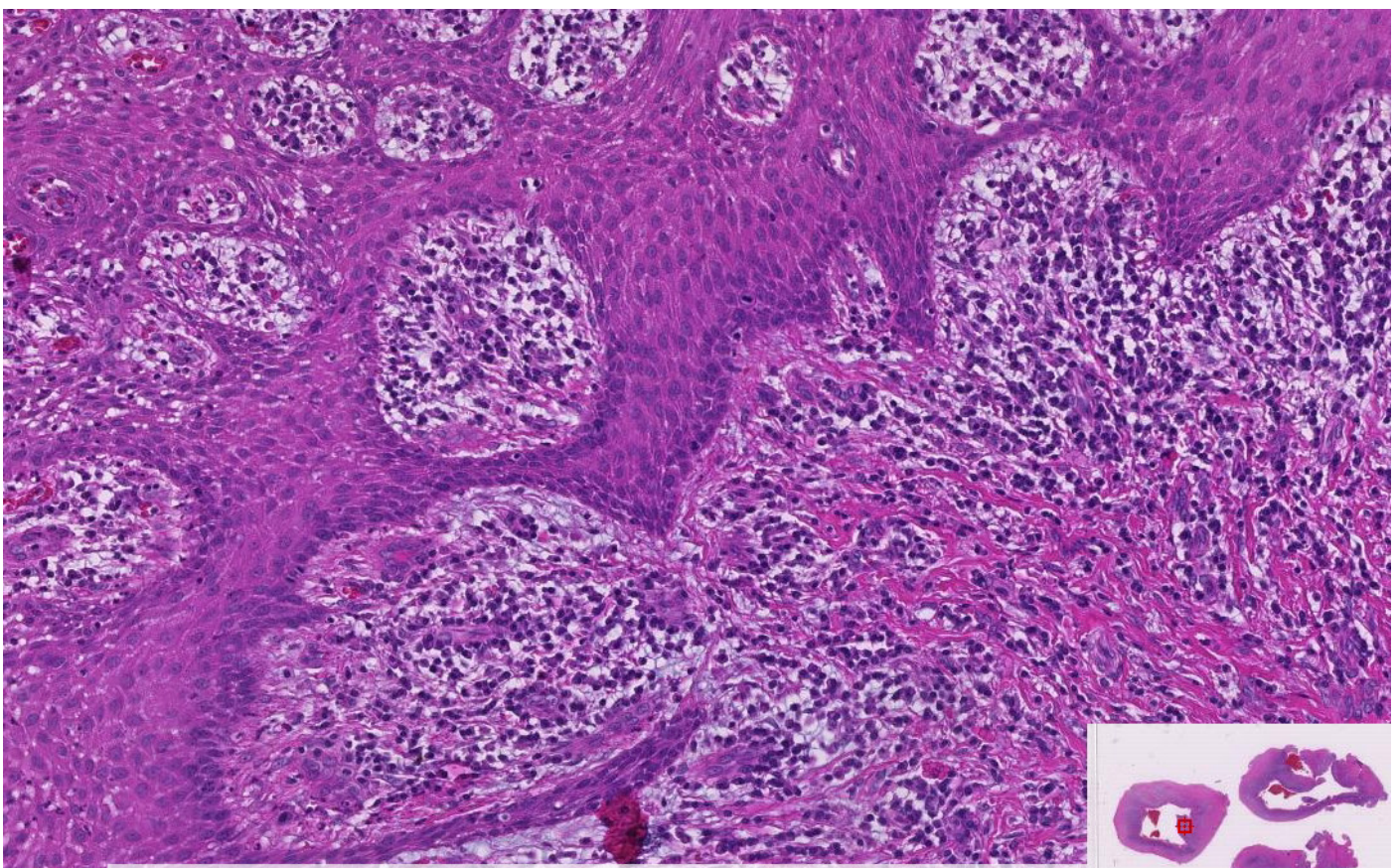
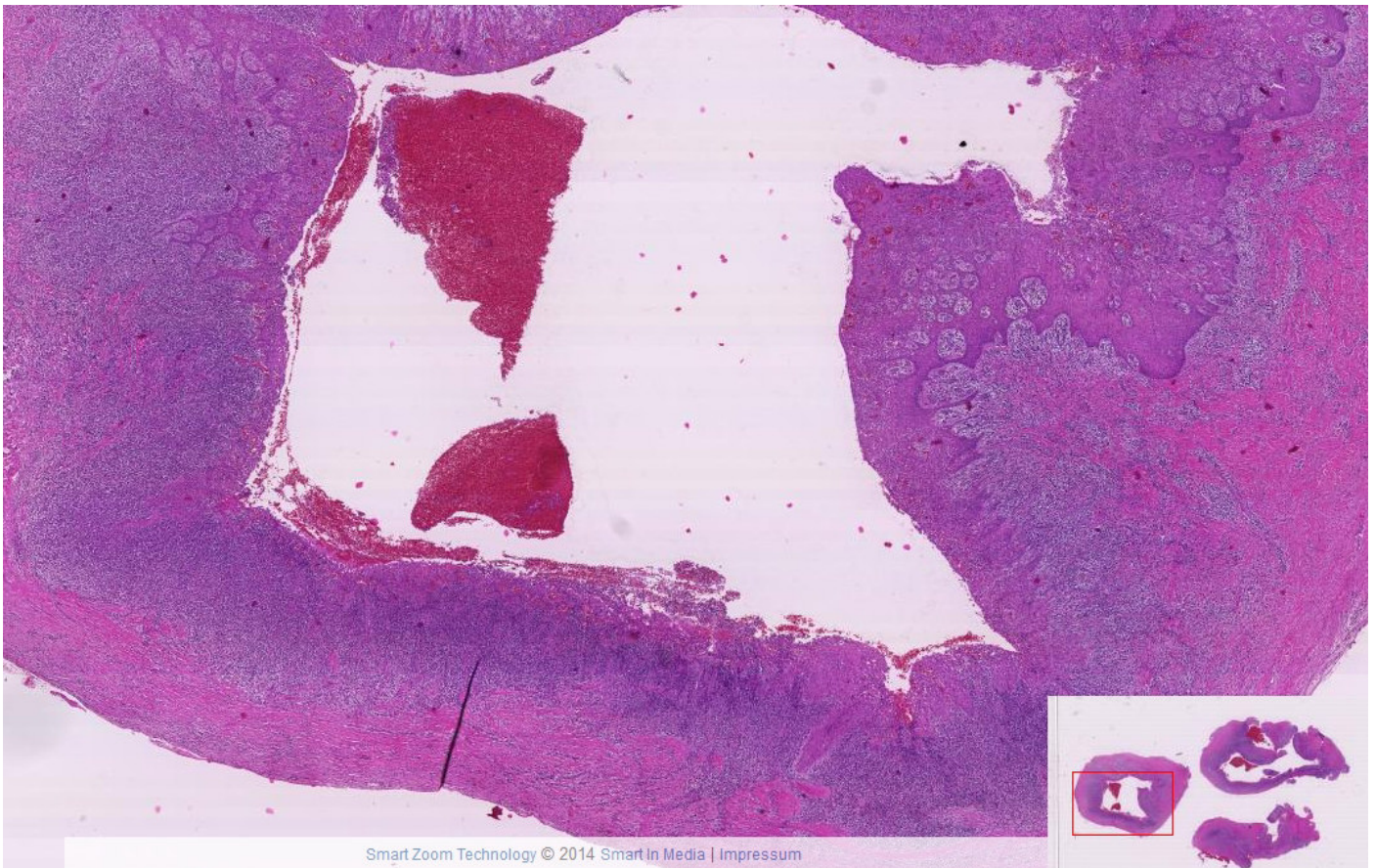
VIII-2 Karies



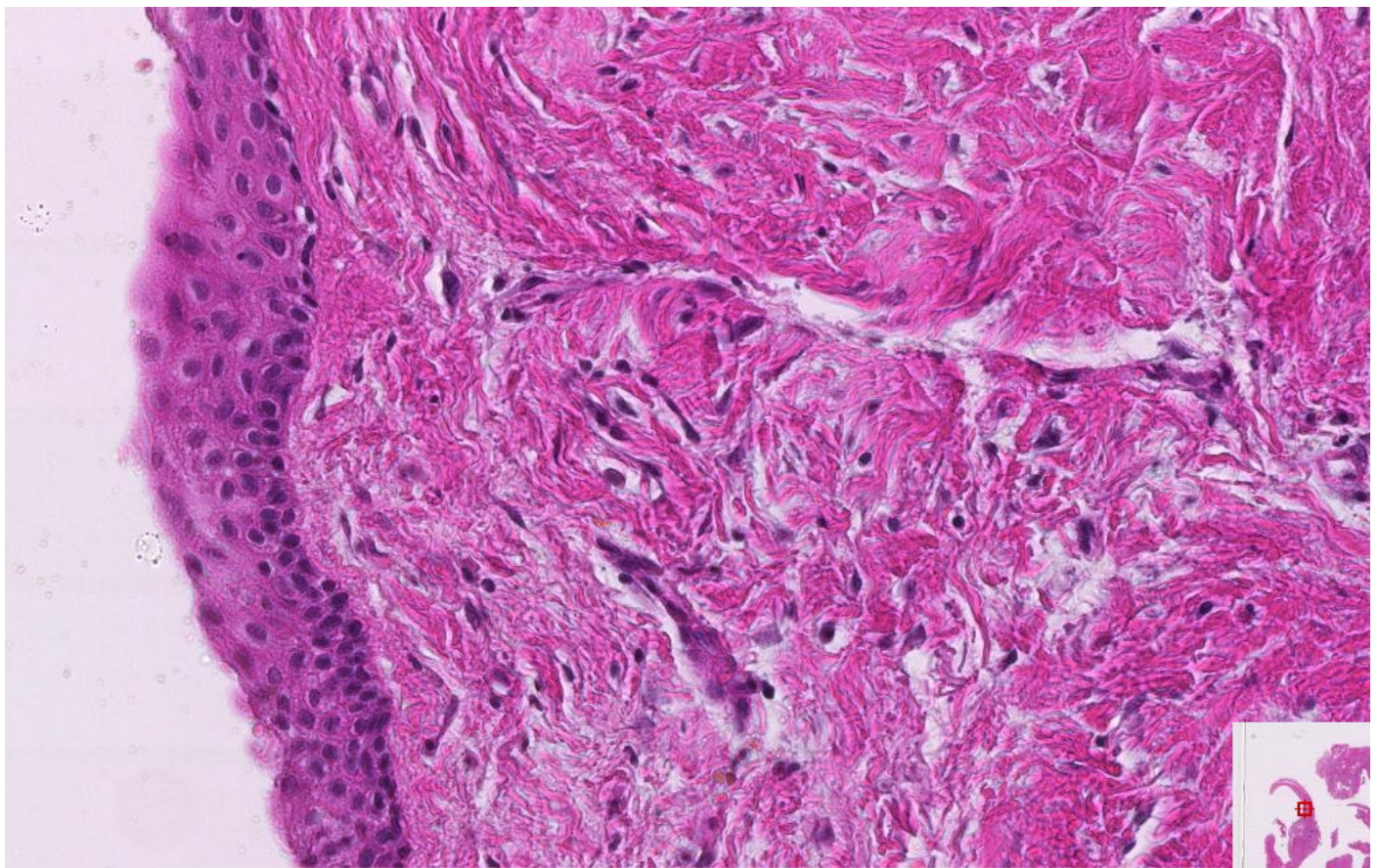
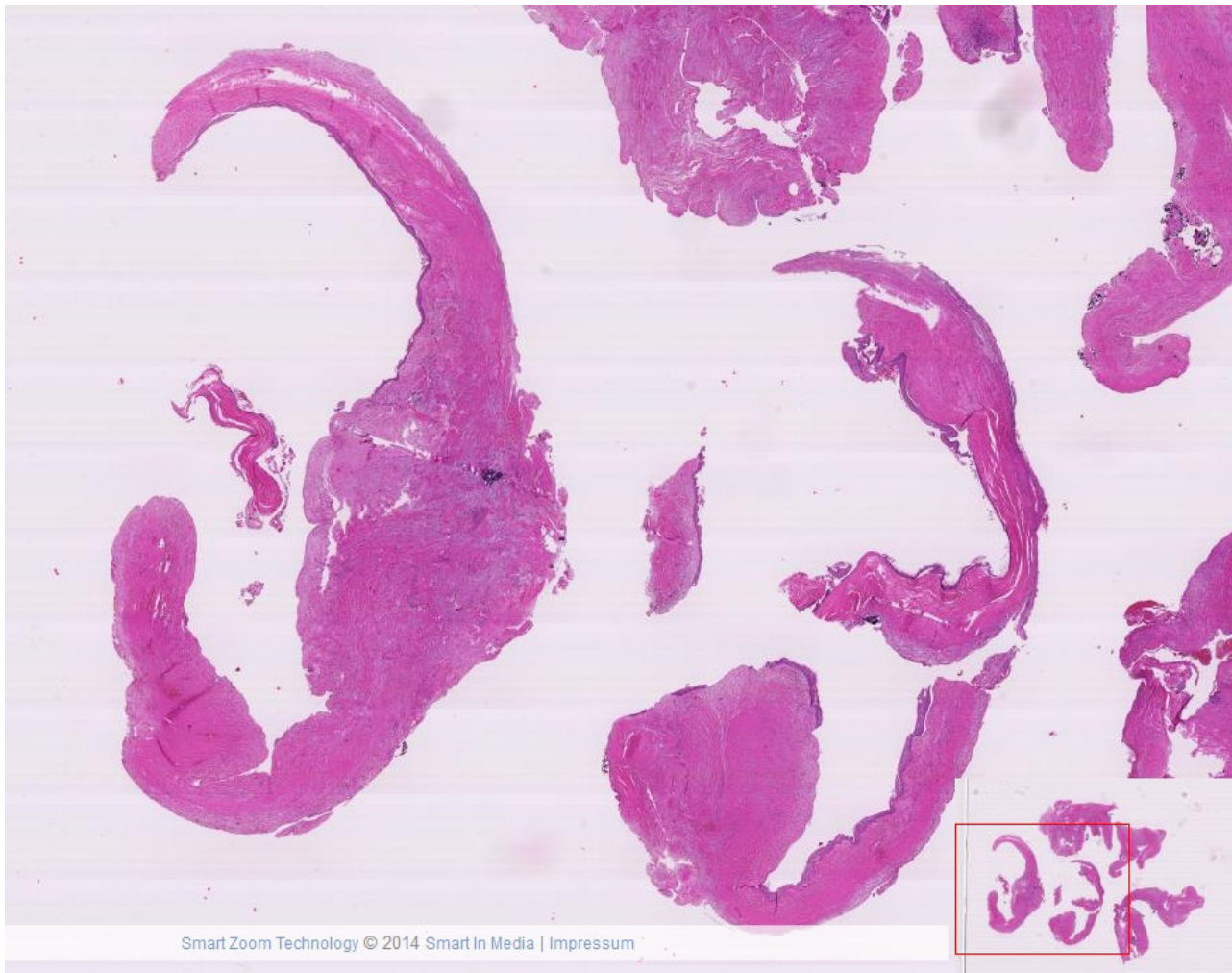
VIII-3 Sog. Apikales Granulom (Kiefer)



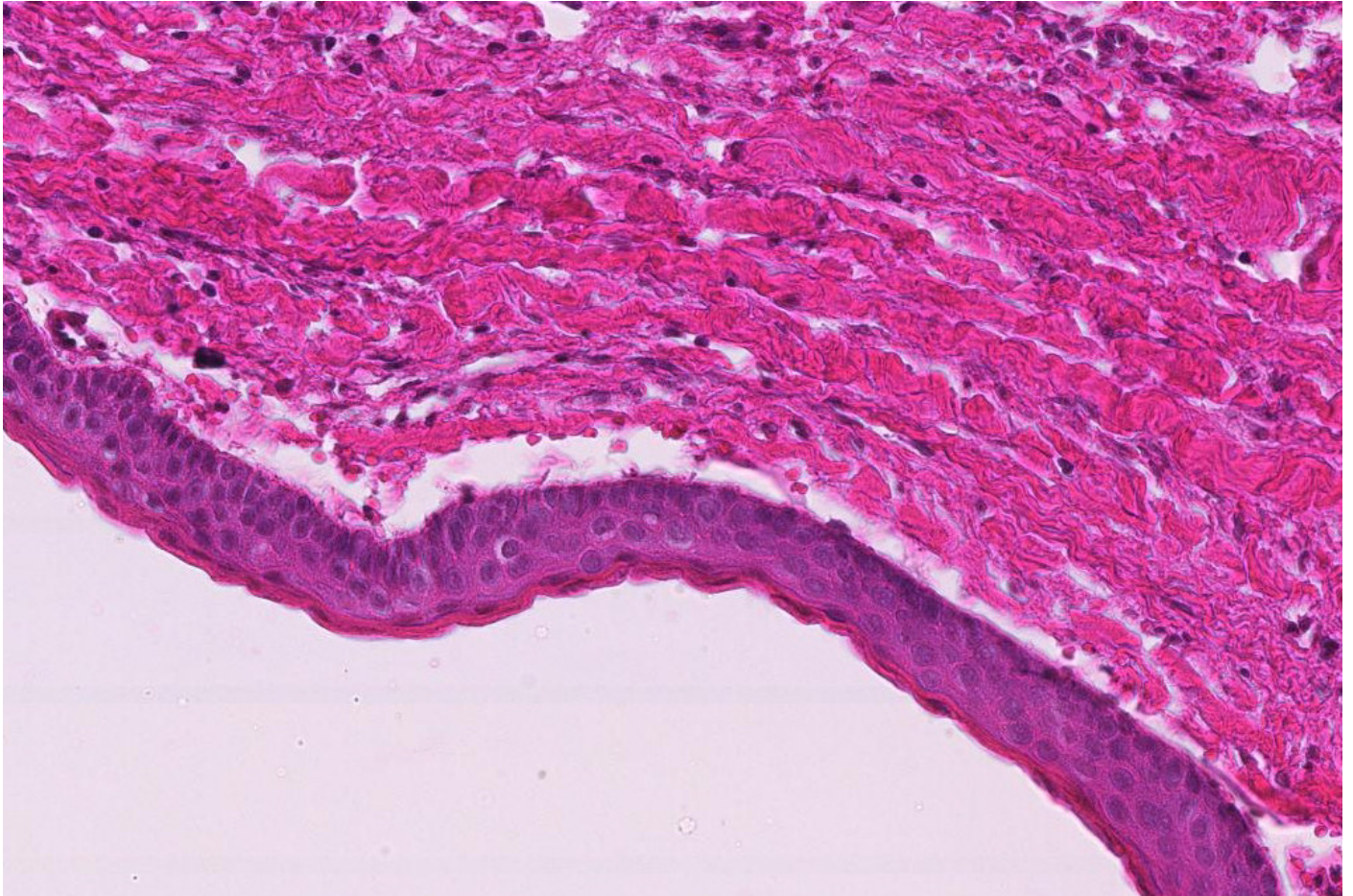
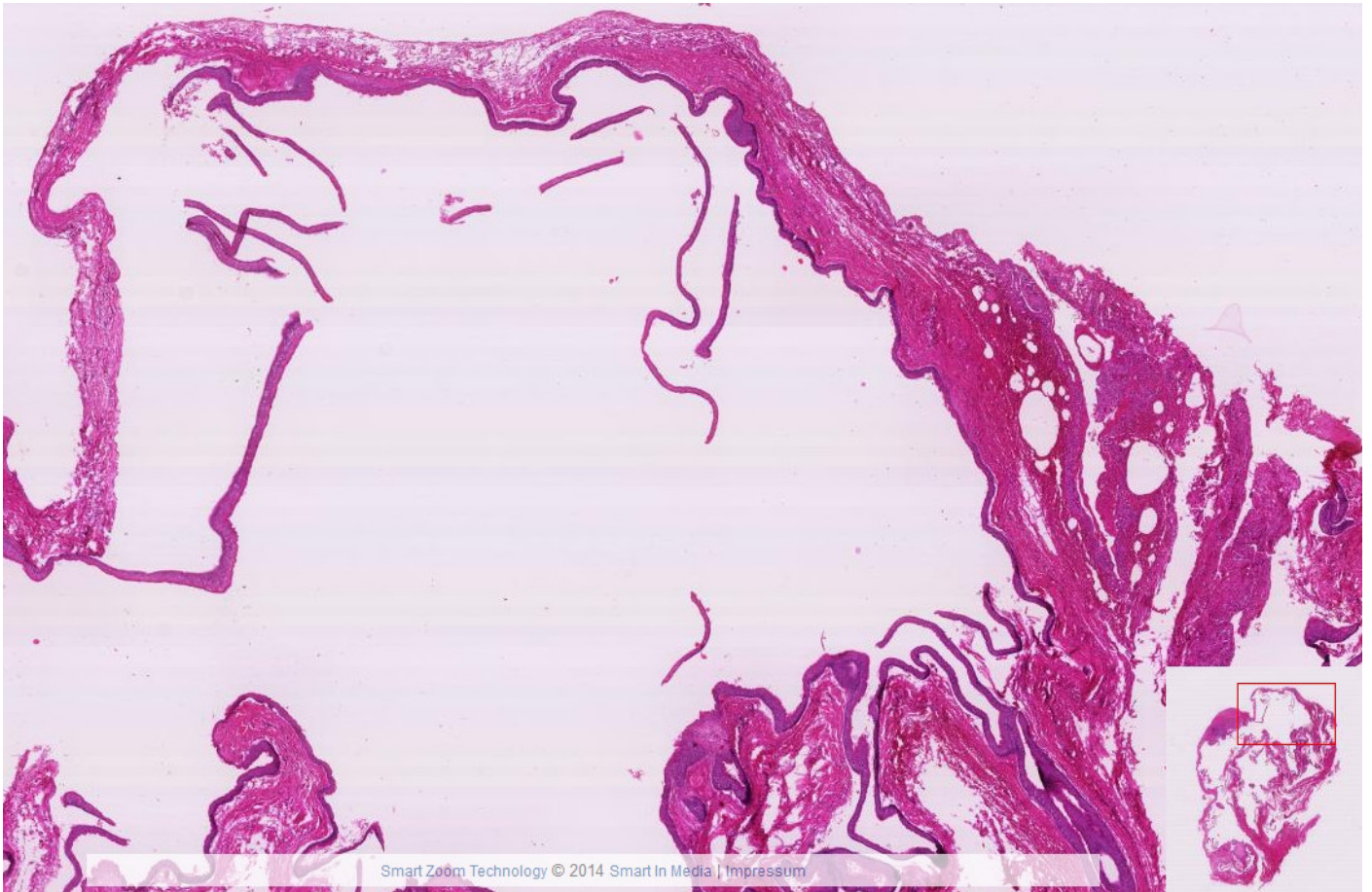
VIII-4 Radikuläre Zyste (Kiefer)



VIII-5 Follikuläre Zyste(Kiefer)



VIII-6 Keratozyste (Kiefer)



VIII-7 Mukozele (kl. Speicheldrüse der Mundhöhle)

